

Programming for All Models

Label is located on front of guide and back of keypad assembly.

Four-Digit User Codes (4DUC)

- Activates lock
- Can be changed
- Up to 19 user codes
- Won't program lock

Programming Code: 123456

User Code A: 4321 S/N: 1-00000000

User Code B: 5678 Model: BE365




Six-Digit Programming Code (6DUC)

- Programs lock
- Can be changed
- Won't operate lock



Schlage Button (on front of lock)

- Lights orange while in programming mode.
- Flashes green when programming is successful.
- Lights red when there is an error. Retry steps or see troubleshooting guide on page 11.
- Press to exit programming mode at any time.
- Wait until  button stops flashing before entering additional codes.

Legend



= Schlage Button

6DPC = Six-Digit Programming Code



= Specific Number on Keypad

4DUC = Four-Digit User Code

Add a new user code

6DPC ➔  ➔ ① ➔ New 4DUC ➔ Reenter New 4DUC

Delete one existing or preset user code

6DPC ➔  ➔ ② ➔ Existing 4DUC ➔ Reenter Existing 4DUC

Change current or preset programming code

IMPORTANT: If you forget your new programming code, you will have to reset the lock.

6DPC ➔  ➔ ③ ➔ New 6DPC ➔ Reenter New 6DPC

Enable/disable all user codes

1. Disable All User Codes: 6DPC ➔  ➔ ④

2. Enable All User Codes: 6DPC

Turn beeper on or off (preset is on)

NOTE: Lock will still beep when battery is low.

6DPC ➔  ➔ ⑤

Delete ALL user codes at once

IMPORTANT: This will delete all the user codes but not the programming code.

6DPC ➔  ➔ ⑥ ➔ Reenter 6DPC

Enable/disable Turn Lock feature (BE365 ONLY) (preset is enabled)

NOTE: When Turn Lock feature is disabled, you must enter a valid user code to extend the bolt.

6DPC ➡  ➡ ⑦

Create a temporary code (house sitter, plumber, etc.)

1. Add New User Code:

6DPC ➡  ➡ ① ➡ New 4DUC ➡ Reenter New 4DUC

2. Give person his/her code, but keep a written copy for yourself.


3. When code is no longer needed, delete User Code:

6DPC ➡  ➡ ② ➡ Existing 4DUC ➡ Reenter 4DUC

Delete a user code if user code is unknown

IMPORTANT: This will delete ALL the user codes but not the programming code.

1. Delete ALL User Codes:

6DPC ➡  ➡ ⑥ ➡ Reenter 6DPC

2. Add New User Code:

6DPC ➡  ➡ ① ➡ New 4DUC ➡ Reenter New 4DUC

3. Repeat step 2 until all User Codes are reentered.

Ensure only you have codes to the lock

1. Change Programming Code:

6DPC ➡  ➡ ③ ➡ New 6DPC ➡ Reenter New 6DPC

2. Delete ALL User Codes:

6DPC ➡  ➡ ⑥ ➡ Reenter 6DPC

3. Add New User Code:

6DPC ➡  ➡ ① ➡ New 4DUC ➡ Reenter New 4DUC

Restore ALL preset lock settings

IMPORTANT: Lock will be reset to the preset programming and user codes. All existing user codes and current programming code will be erased.

1. Disconnect the battery.

(For FE575, see page 3. For FE595, see page 5. For BE365, see page 7.)

2. Press and release .

3. Reconnect the battery and wait until  is no longer lit.

4. Within 10 seconds, press and hold  until  lights green and the lock beeps.

Keeping Your Lock Secure

Security Tips

1. Do not share your programming code with other people.
2. Write down your programming and user codes and keep them in a safe place.
(Use the table below if desired.)
3. Give each person his/her own user code. You can have up to 19 user codes.
4. If you don't remember or don't know who has a user code, you can delete all the user codes. (See page 8.)

Name	User Code

Name	User Code

Name	User Code

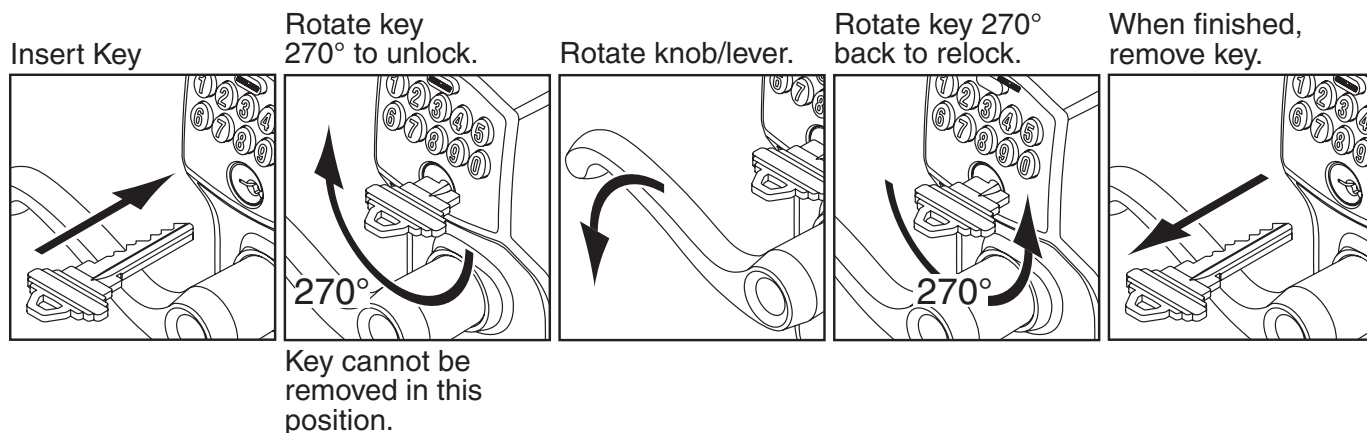
Key Override

Use key override to unlock the lock in the following situations:

1. Battery is dead.
2. No User Code is known.

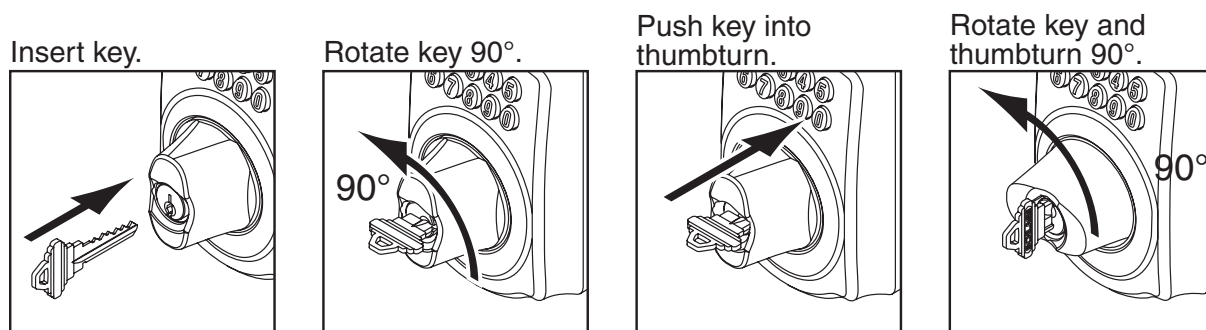
FE575 and FE595

NOTE: Key does not retract latch.






BE365 Only

NOTE: Key will both extend and retract deadbolt.



Troubleshooting Guide

Problem	Beeps*	Lights	Solution
User code (4DUC) does not unlock lock.	2	Red	4DUC entered is not a valid 4DUC.
	1 High, 1 Low	Green then Red	User codes have been disabled. Enable User Codes. (See page 8.)
 does not light when numbers are pressed.	None	None	<ol style="list-style-type: none"> Too many incorrect user codes have been entered. Wait 30 seconds and try again. If keypad does not respond after 30 seconds, then replace battery. For FE575, see page 3. For FE595, see page 5. For BE365, see page 7.
There is a delay before unlock after a valid 4DUC is entered.	High/Low, then 1	Red then Green	Battery is low and should be replaced. For FE575, see page 3. For FE595, see page 5. For BE365, see page 7.
 blinking red but no codes have been entered.	None	Quick Red Blinking	Battery is dead and MUST be replaced. For FE575, see page 3. For FE595, see page 5. For BE365, see page 7.
Cannot add a new 4DUC.	High/Low	Red	19 4DUCs already exist. Delete a 4DUC before adding a new one. (See page 8.)
	2	Red	<ol style="list-style-type: none"> Second 4DUC entered did not match first 4DUC entered. The 4DUC matches the first four digits of the existing 6DPC.
Cannot delete a 4DUC.	2	Red	Second 4DUC entered did not match first 4DUC entered.
Cannot change 6 digit programming code (6DPC).	2	Red	<ol style="list-style-type: none"> Second 6DPC entered did not match first 6DPC entered. First four digits of new 6DPC match an existing 4DUC.
Cannot delete all user codes.	2	Red	6DPC entered second time is incorrect.
Lock will not stay in programming mode.	2	Red	<ol style="list-style-type: none"> Any key other than  was pressed immediately after programming mode was entered. An incorrect entry was made during the programming process.
For BE365, after pushing Schlage button and rotating thumbturn, the deadbolt does not extend.	None	None	Turn Lock Feature is disabled. See page 9.
I forgot my 6DPC.	None	None	<ol style="list-style-type: none"> Check front of manual or back of keypad assembly for preset 6DPC. If needed, restore lock to preset settings. (See page 9.)
Outside thumbturn does not freely spin after deadbolt is thrown.	None	None	Lock is malfunctioning. See page 12.

* Number of beeps if beep is turned on.

Schlage Customer Service

U.S.A. and Canada
P.O. Box 1210
Olathe, KS 66051-1210

(888) 805-9837
Fax (800) 366-5625
www.schlage.com